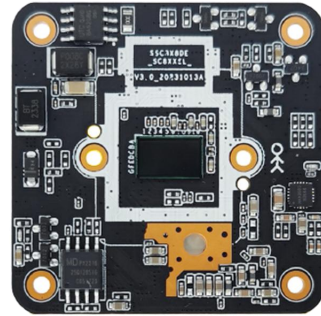


MC-J86 8MP AI Black light HD Network Camera Module



The MC-J86 is a cost-effective 8MP AI Black light HD Network Camera Module designed for both indoor and outdoor use. It features a 1/1.8" STARVIS CMOS and is powered by the Mstar SSC378DE SoC, equipped with 1Gb of RAM. In terms of extended I/O capabilities, it supports dual light source illumination, as well as microphone and speaker connections, enabling two-way audio and additional interfaces.

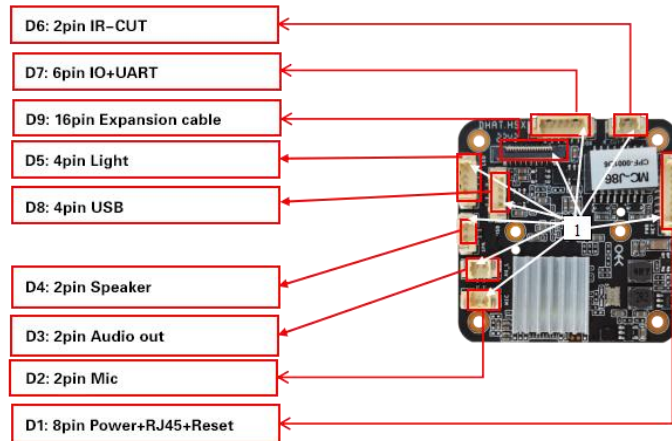
Key Features:

- 1/1.8" 8MP STARVIS CMOS
- Maximum resolution up to 3840×2160@20fps
- Supports H.265+, H.265, and H.264 encoding
- True Day/Night, 3D DNR, Digital WDR
- Support Motion Detection, human detection
- Support AI vehicle type detection, non-motor vehicle detection, area detection and mixing line detection
- Support two-way voice intercom, voice broadcasting, and custom voice
- Support CDS control and PWM control
- Support the P2P on Android, IOS
- Support ONVIF protocol
- Support TCP/IP/HTTP/NTP/DHCP/SMTP/RTSP
- Open SDK(Linux, Windows, Android), CGI Protocol Document

Technical specifications:

Image Sensor	
Sensor	1/1.8" 8MP CMOS
Maximum Resolution	3840×2160@20fps,3072x2048@25fps
Minimum illumination	Color:0.01Lux B/W:0.005Lux
Function	
AGC	Auto/Manual
Shutter Speed	1/2 - 1/20,000s,Slow shutter support
Wide Dynamic Range	Digital WDR
Day/Night Mode	
Exposure Mode	Auto/ Manual/shutter mode
White Balance	Auto/ Manual /ATW/ Indoor/Outdoor/ lamp
Day & Night	External control(IR Cut Filter)
Image Resolution	
Main Stream	3840×2160@20fps,3072x2048@25fps,2592×1944@30fps ,2560 ×1440@30fps
Sub Stream	D1/VGA/640×360@30fps
Audio resolution	
Audio Out/In	Supported/Wired required /1 Input 1 Output
Audio processing	G.711 codec standard
AI functionality	
AI functionality	Support AI human detection,vehicle type detection , non- motor vehicle detection, area detection and mixing line detection
General Protocol	
network protocol	TCP/IP,HTTP,NTP,IGMP,DHCP,UDP,SMTP,RTP,RTSP,ARP,DDNS,DNS,P2P
ONVIF protocol	Standard ONVIF
Network Interface	
Wired	1ch 10/100BaseT Ethernet,RJ45 interface
WIFI	Support(Not default)
Other	
TF Card	Reserved TF card expansion interface,supporting up to 512GB
power supply	DC 12V
Size	42x42mm
operation temperature	-40 °C ~65 °C
Working humidity	≤90%RH(non-condensing)

Interface Pin Definition:



Interface	Pin	Pin name	Functional parameter
D1	1	DC 12V+	DC power input 12V
	2	GND	GND
	3	RJ45_6	J45_6
	4	RJ45_3	J45_3
	5	RJ45_2	J45_2
	6	RJ45_1	J45_1
	7	Reset	Reset
	8	LED+	Network indicator light interface
D2	1	MIC-	Microphone
	2	MIC+	
D3	1	GND	GND
	2	AUDIO_OUT	AUDIO_OUT
D4	1	SPK-	Speaker_8Ω2W
	2	SPK+	
D5	1	CDS_IN	Hard light sensitive infrared
	2	GND	GND
	3	PWM1	IR
	4	PWN0	Yellow light/white light
D6	1	IR-CUT+	IR-CUT+
	2	IR-CUT-	IR-CUT-
D7	1	REST	GND
	2	TX1	UART Interface(Main serial port)
	3	RX1	
	4	TX2	
	5	RX2	Reserved serial port
	6	IO-OUT	SPKEN
D8	1	GND	GND
	2	DP	DP
	3	DM	DM
	4	12V	DC 12V out
D9	1-16	Expansion	16PIN TF-card Expansion IO